



# [BYNATURE]

*Enjoy. Breathe. Feel good.*

## PAPIERFLORA INSTALLATION GUIDE



# TOOLS

- Glue brush
- Wallcovering adhesive (low VOC recommended)
- Laser (for alignment)
- Knife / utility knife
- Vinyl brush / smoothing brush
- Plastic seam rollers
- Trim guides
- Ladder
- Broom / brush
- Sponge / soft cloth (for cleaning excess glue and bubbles)
- Buckets with water (for cleaning tools and lightly moistening wallpaper if needed)
- Measuring tape / ruler (for precise cuts)
- Pencil / marking tool (for discreet marks)
- Smoothing tool / wallpaper squeegee (for removing large bubbles)
- Protective gloves (optional, to keep hands clean)
- Drop cloth / plastic sheet (to protect floors and furniture)

# PREPARATION OF THE SURFACE

The base must be dry, stable, evenly absorbent, clean, dust-free, smooth, sufficiently even for wallpapering and of a neutral colour. Eliminate stains or colour differences on the wall with a suitable pigmented wallpaper primer to prevent them from shining through.

Cracks, holes and unevenness must be repaired with suitable measures before wallpapering. Recently plastered walls must be fully dried. Prime highly absorbent surfaces with a suitable non-pigmented or water-based primer.

Base:

Surface	Base layer		
	Glue	Wallpaper primer colourless	Wallpaper primer coloured
Plaster (PIc-PIII)	x	x	x
Gypsum plaster (PIV)	x		x
Concrete	x	x	x
Gypsum-wallboard	x	x	x
Gypsum fibreboard	x	x	x
Gypsum plasterboard		x	x

Even absorption of surface needs to be ensured after priming.

# WALLPAPERING

## **We recommend:**

Pre-inspect the strips visually for deviations and/or defects before processing and, if necessary, reverse hang them.

- Pre-trials
- Start at window or light source
- Pay attention to room temperature +18 up to +25C, air humidity 30 - 60% and airflow

## **Wallpapering technique:**

Create a plumb line for the first panel. Fully and evenly saturate wall for each track individually with glue, using a short-fibre paint roller and a brush for the corners. Keep back of the wallpaper dry and clean. Apply the wallpaper without pre-soaking onto the glued surface. Press down panels with rubber roller, avoiding bubbles or folds. Cut away excess wallpaper using a ruler and a cutting knife.

## **Overlap and double-cut:**

Apply the glue for the second panel. Each panel overlaps approx. 2 cm with the one next to it. Take into consideration possible imperfections 1-2 mm around the edges. Use a bar or a long ruler to cut both panels at the same time, to make them fit at the seams. Press in with a seam roller.

## **Free match:**

The naturally scattered materials do not require matching patterns between panels.

1. Clean and smooth the wall, making sure it is free of dust, grease, or imperfections.



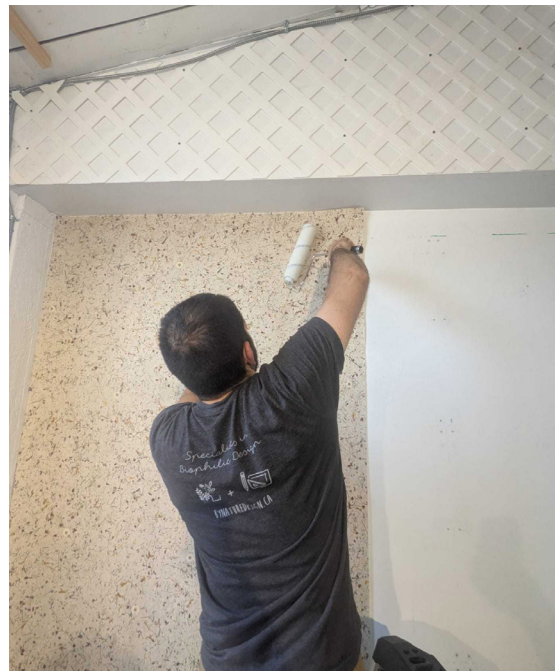
2. Measure the height of the wall and cut strips of wallpaper with an additional margin (1 to 2 inches) for precise adjustment.



3. Apply the glue either on the wall or directly on the paper, depending on the type of wallpaper. Use a brush or roller to spread the adhesive evenly.



4. Carefully aligns the first strip with a vertical reference line (you can use a laser level). Hold it at the top and gradually lower it, smoothing with a firm plastic or rubber roller to remove bubbles and wrinkles.



5. After placing the first wallpaper strip, leave about a 1-inch overlap when installing the second strip over the first. Using the laser line as a guide, trim the excess with the trim guide.



6. Roll over the seam with the plastic seam roller to secure the edges.



7. Once all strips are placed, trim the excess at edges, corners, and near the ceiling, then roll over the edges with the firm roller.

8. Check the seams and edges; clean any visible adhesive with a damp cloth. Make sure everything is well adhered and even.



## FINAL STEPS

Glue stains on the surface can be removed with a dry cloth (for light-products) or a damp cloth (for premium products).

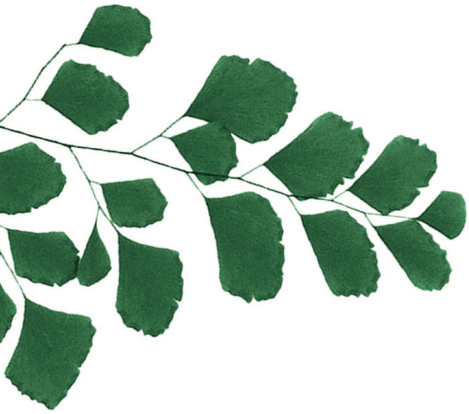
For the drying process, keep the windows closed and do not heat excessively. 18-22°C, without draft is ideal.

After the wallpaper has dried, remove detached fibres with a dry cloth. Fibres might come off due to the wallpaper being wet from the glue, which is normal. We do not bear liability to damages caused by cleaning the surface.

## REMOVAL

Pull wallpaper off the wall and remove leftovers with spatula or scraper.

Tip: pre-cut wallpaper into tracks for easier removal (perhaps use water and wallpaper stripper beforehand).



**ByNature Import Inc**  
1.855.436.2919  
info@bynaturedesign.com  
www.bynaturedesign.com



*Vancouver - Calgary - Toronto - Montreal - Quebec (City) - New York  
Canada - USA - Europe*