



COMMERCIAL METAL PLANTERS



CONTENTS

04 STANDARD PLANTERS

Cubes
Columns
Troughs
Partitions
Tapers
Cylinders

16 CUSTOM FABRICATION

Metal Options
Additional Considerations
Powder Coating
Custom Modular
Custom Shapes
Custom Site Furnishings

32 DETAILS & SPECIFICATIONS

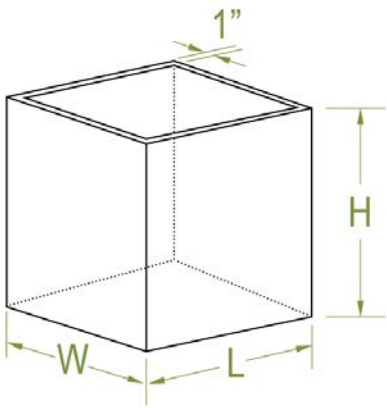
34 WARRANTY & CARE





CUBES

MATERIAL: 0.125" marine grade 5052 aluminum
FINISH: Durable, UV rated powder coat
DRAINAGE HOLES: Yes/No
TOP LIP: Standard 1" lip



DIMENSIONS (IN)			WEIGHTS	
L	W	H	LBS	KG
16	16	16	16	7
20	20	20	25	11
24	24	24	36	16
28	28	28	49	22
36	36	36	81	36

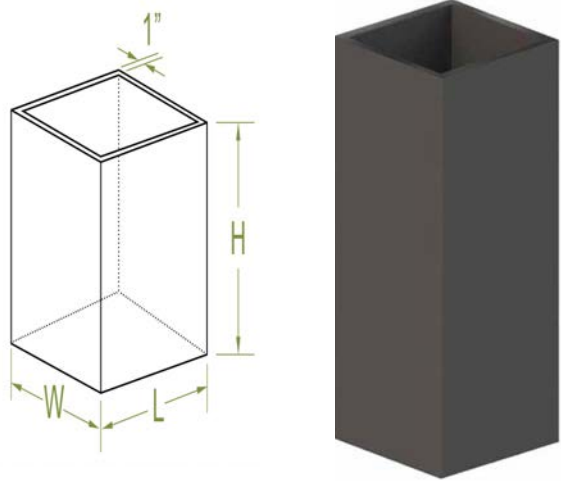


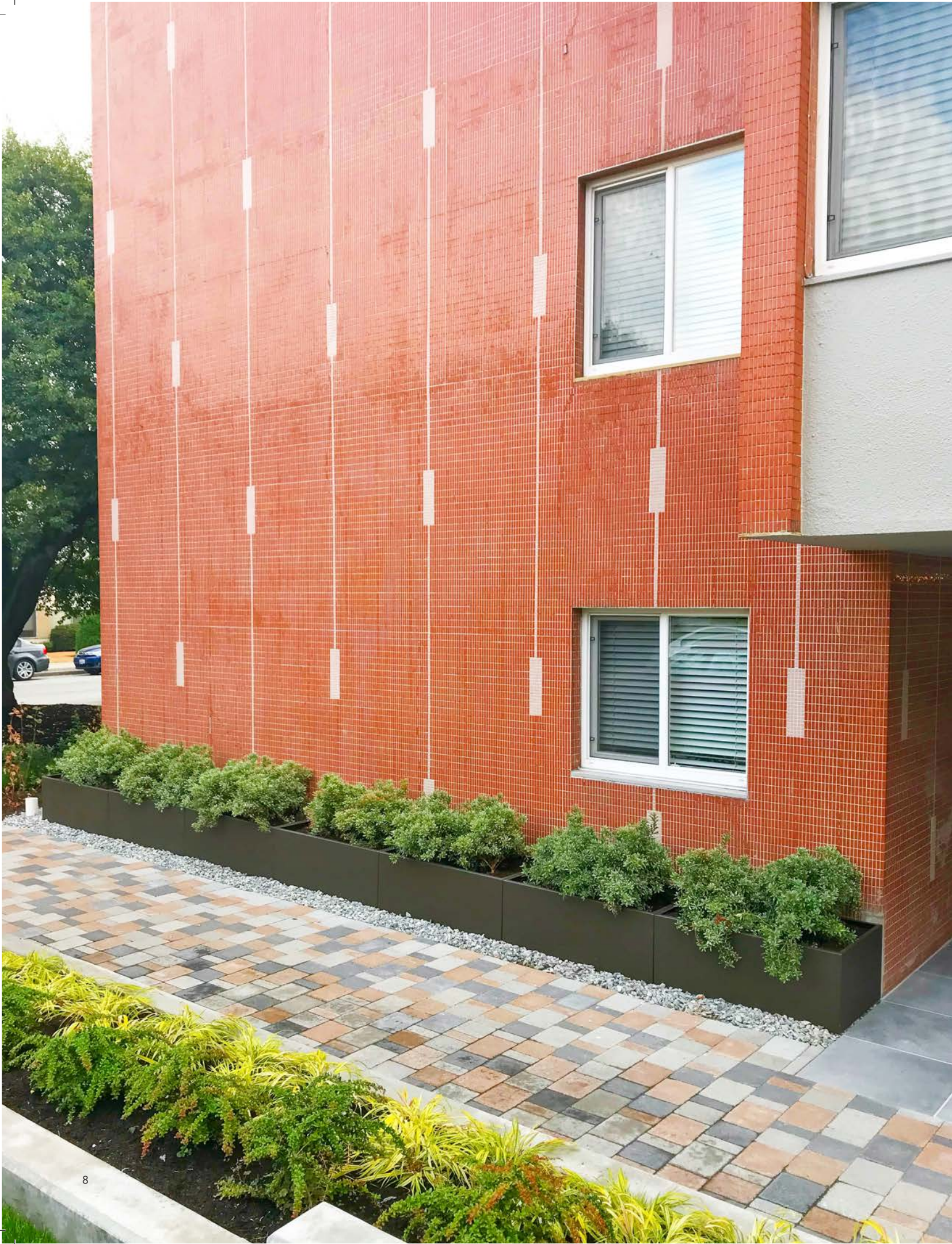
COLUMNS

MATERIAL: 0.125" marine grade 5052 aluminum
FINISH: Durable, UV rated powder coat
DRAINAGE HOLES: Yes/No
TOP LIP: Standard 1" lip



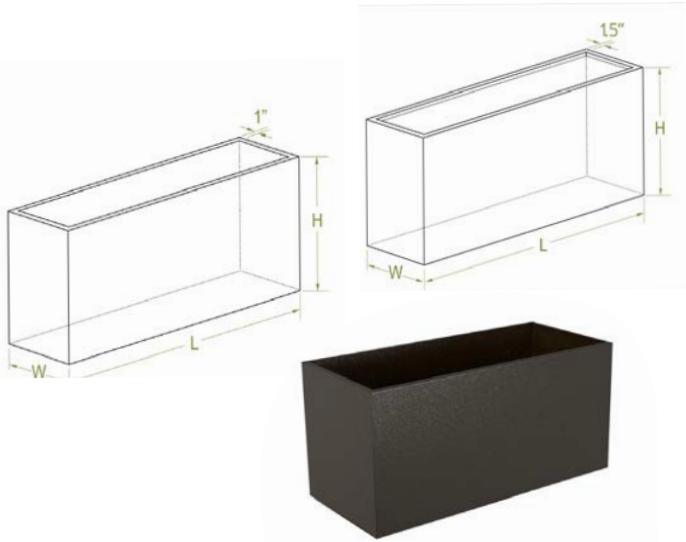
DIMENSIONS (IN)			WEIGHTS	
L	W	H	LBS	KG
12	12	24	16	7
12	12	32	21	10
12	12	40	26	11
16	16	32	29	13
16	16	40	35	21
20	20	32	37	17
20	20	40	45	20
18	12	32	27	12
24	12	32	32	15





TROUGHS

MATERIAL: 0.125" marine grade 5052 aluminum
FINISH: Durable, UV rated powder coat
DRAINAGE HOLES: Yes/No
TOP LIP: Standard 1" lip
** 1 1/2 lip with 1" return +stiffeners

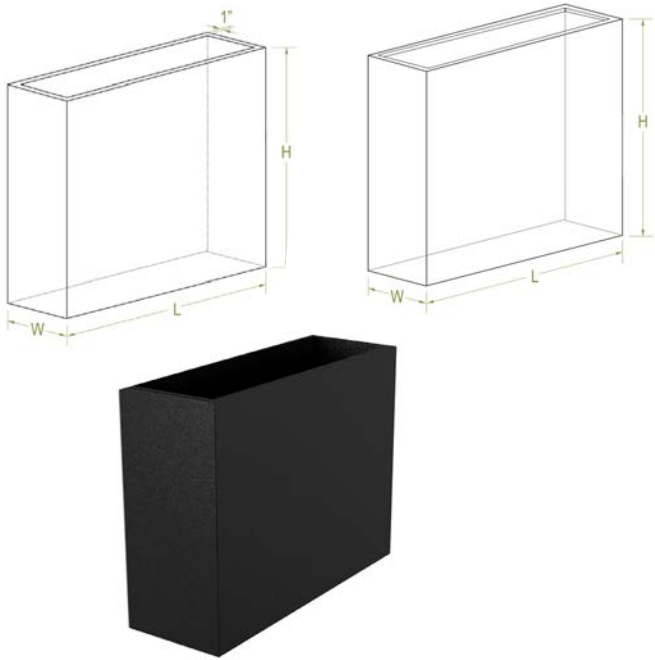


DIMENSIONS (IN)			WEIGHTS	
L	W	H	LBS	KG
32	10	16	21	10
36	10	16	23	10
40	10	16	25	11
46	10	16	28	13
32	10	24	29	13
36	10	24	32	15
40	10	24	35	16
46	10	24	39	18
40	20	24	46	21
46	20	24**	51	23
60	20	24**	63	29
72	20	24**+	73	33



PARTITIONS

MATERIAL: 0.125" marine grade 5052 aluminum
FINISH: Durable, UV rated powder coat
DRAINAGE HOLES: Yes/No
TOP LIP: Standard 1" lip
** 1 1/2 lip with 1" return
+stiffeners



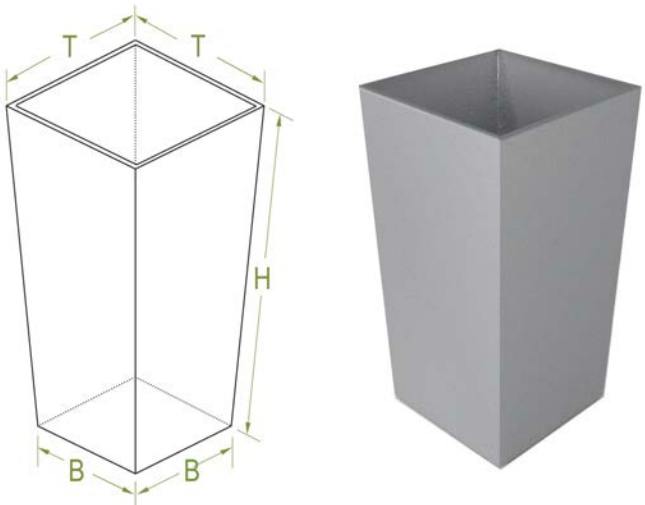
DIMENSION (IN)			WEIGHTS	
L	W	H	LBS	KG
32	12	32	40	18
36	12	32	43	20
40	12	32	47	21
46	12	32	53	24
60	12	32***	66	30
72	12	32***	77	35
32	16	42***	56	25
36	16	42***	61	28
40	16	42***	66	30
46	16	42***	74	34
60	16	42***	91	41
72	16	42***	106	48





TAPERS

MATERIAL: 0.125" marine grade 5052 aluminum
FINISH: Durable, UV rated powder coat
DRAINAGE HOLES: Yes/No
TOP LIP: Standard 1" lip



DIMENSIONS (IN)			WEIGHTS	
L	W	H	LBS	KG
15	12	24	18	8
16	12	32	25	11
17	12	40	31	14

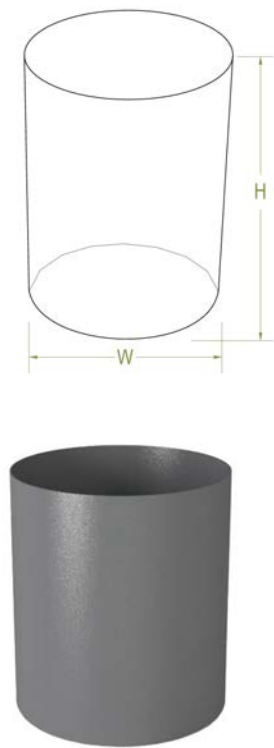


CYLINDERS

MATERIAL: 0.125" marine grade 5052 aluminum
FINISH: Durable, UV rated powder coat
DRAINAGE HOLES: Yes/No
TOP LIP: none



DIMENSIONS (IN)		WEIGHTS	
W	H	LBS	KG
18	18	26	12
18	24	32	15
18	32	39	18
24	18	26	12
24	24	32	15
24	32	39	18
36	18	26	12
36	24	32	15
36	32	39	18



CUSTOM FABRICATION



METAL OPTIONS

Aluminum

We make our planters out of a variety of different sheet metals, but typically we are using thick gauge, marine grade aluminum. Aluminum is most often the best choice when it comes to making planters. It is light, strong and will never rust. They are easy to

ship, handle and install. Our go-to is 1/8" thick 5052 aluminum alloy. This is what all of our standard planters are made out of. We fabricate using this thickness and employ fabrication techniques to make our planters incredibly strong, so they will not bow out or deflect. This enables us to keep prices down while producing a premium and robust product.

When needed, we fabricate out of thicker gauges of 5000 & 6000 series aluminum.

We also fabricate using galvanized steels, corten, and stainless of various thicknesses.

Galvanized Steel

Galvanized steel, as a raw material, can be cost effective when compared to, corten steel, stainless steel or aluminum.

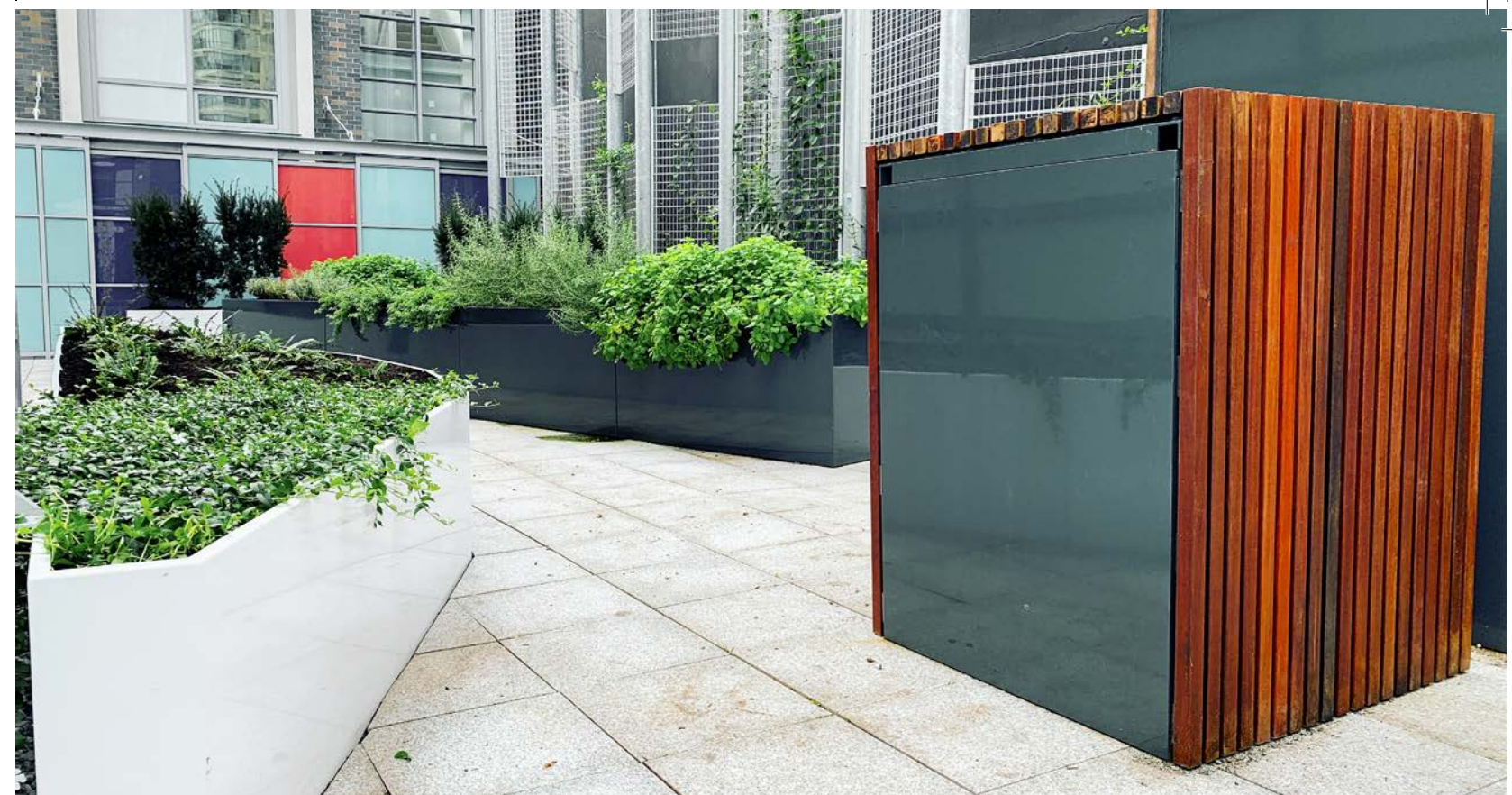
Galvanized steel is quite weather resistant, due to its zinc coating. Without getting into the specific chemical reactions, essentially the zinc reacts first instead of the steel, and it creates a barrier that prevents the underlying

steel from rusting. That's the good news. The bad news is that you cannot weld zinc coated steel. It creates poisonous fumes. With this in mind, there are two ways to create metal planters out of galvanized steel.

One way is by using pre-galvanized material. We can fabricate these by riveting or lock forming them together. This results in a more industrial aesthetic where seams will be visible.

The other way is a process called hot-dipping. This is where we fabricate planters out of steel and then dip them in molten

zinc to galvanize them. This process works great, but it requires us to make these planters out of incredibly thick metal so they won't warp when dipped in molten zinc. This thicker material makes these planters more expensive but allows us to





make these planters with no seams, thereby keeping the same premium aesthetic of our standard planters.

Weathering Steel (Cor-ten)

We fabricate custom planters out of Weathering Steel. Weathering Steel is often referred to by the generic trademark name COR-TEN steel. It is a steel alloy with great tensile strength that was developed to form a

stable rust patina which provides protection from the elements.

Weathering Steel forms a protective layer on its surface under the influence of the weather... so it is essentially allowed to rust in order to form a protective coating. This process of surface oxidation and complete self-sealing can take anywhere from 6 months to 2 years, depending on environmental factors such as temperature cycles and precipitation levels to name a few.

We typically fabricate most of our custom Weathering Steel planters out of 11 gauge steel, but we can also work with thicker material if needed.

Metal Thickness

There is no generic metal thickness that applies to all projects. However, when placing an order or asking for a quote, we will definitely recommend a metal thickness that

will be the most appropriate for your project. We approach these recommendations by properly balancing the fabrication requirements of your planters while providing you with the best possible price. This means that in most cases we will be able to utilize 1/8" material or at the most 3/16".





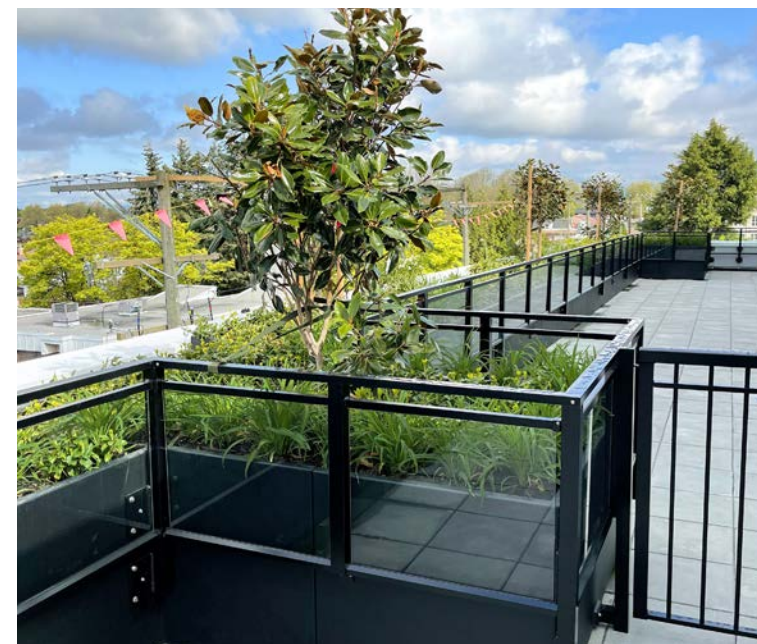
POWDER COATING

We actually don't "paint" our planters, we powder coat them. Powder coating is an environmentally friendly coating process that creates no VOC's and creates a more durable finish than wet paint.

Powder coats are available in a plethora of colors and finishes, so you can have your planters in any colour you want! That being said, we have 8 stock colours that you can choose from at no extra charge. However, if you do need a custom colour we can easily help you with that.

we specifically use "Super Durables" powder coats. Why is this important? Well, planters go through a lot of wear and tear... from when they are installed to daily foot traffic and aggressive plant growth... they take a beating. We want to make sure that the powder coat we utilize is the longest lasting in all types of conditions, because our goal is to have planters that look great for decades. Super Durables are a critical part of that equation.

What makes a "Super Durable" a "Super Durable?" There are three main things. First, they are impact resistant. This is a hallmark of all powder coat types, but it is an added benefit when choosing a "Super Durable" powder coat. Secondly, they are resistant to salt spray... which is essential in marine or seaside applications. Finally, they are UV rated... which means the powder is specifically designed to resist fading in the sun compared to regular powder coats. This unfortunately doesn't mean "Super Durables" won't fade... everything eventually fades in the sun, but this powder is formulated to retain it's brilliance for as long as possible.



The powder coating process

The first step is dressing. This is where we grind smooth the metal that has been welded. We want our welded seams to look exactly the same as the sections we have bent. This process is important to get right, as any anomalies will show up in the finished aesthetics.

After the planters are finished being dressed, they need to be properly washed to remove any dirt and oil that could impede the powder from adhering to the surface of the metal. Once this light chemical wash has been completed and the planters are dry, they are moved to the next phase.

The process of powder coating uses electrical charges. The powder is essentially small

plastic granules. We use an electrostatic gun to negatively charge and then spray those powder granules onto a planter that has been grounded. What you end up with is an even film of plastic granules, adhered to the surface of the metal planters as a result of being electrically charged.

After coating them with these charged plastic granules, they are then gently wheeled into a large oven that is approximately 400 degrees Fahrenheit. This heat melts the plastic granules onto the surface of the planters evenly, creating a uniform durable coating. This baking process takes approximately 20 minutes.

The planters are then wheeled out of the oven to cool down.



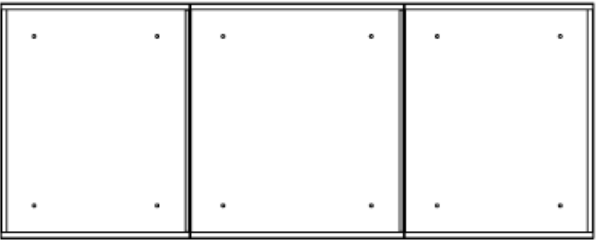
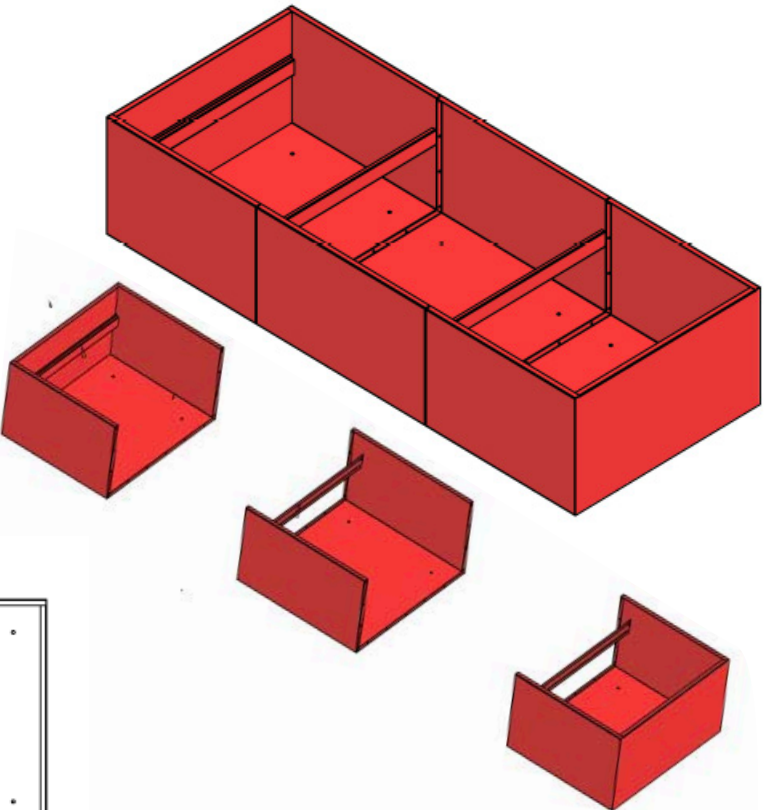


CUSTOM MODULAR

MATERIAL: 0.125" marine grade 5052 aluminum
FINISH: Durable, UV rated powder coat
DRAINAGE HOLES: Yes/No
TOP LIP: *1 1/2" Lip, 1" Return

MODULAR DESIGN

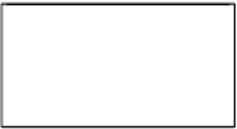
- Bolt together sections
- Creates a continuous planting area



Plan View



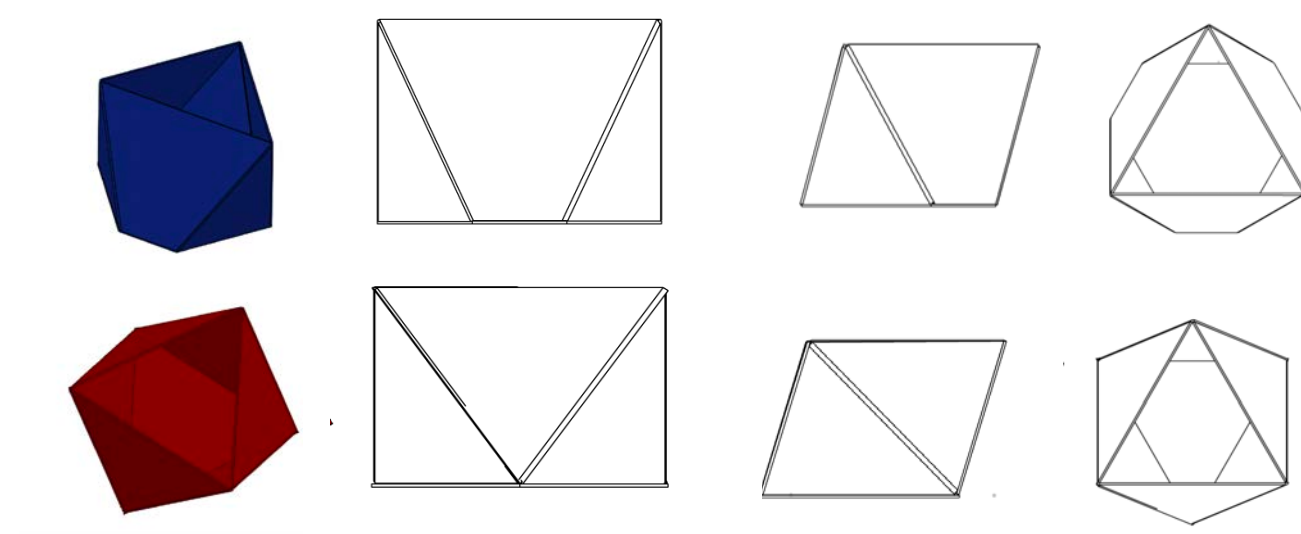
Side View



End View

- Size of planter unlimited
- Drip irrigation easily used
- Material usage maximized
- Cost effective
- Shipping optimized
- Easy handling & assembly

CUSTOM SHAPES



FEATURES

Custom Sizes

Any shape or dimension you can think of we can make with precision and excellence.

Custom Colors

Any color is possible, send us your RAL or Pantone choices and we will make it happen.

Material Options

Aluminum

Lightweight, strong and resistant to corrosion, perfect for commercial grade planters.

Galvanized

A cost effective option for basic industrial looking functional outdoor planters.

Corten

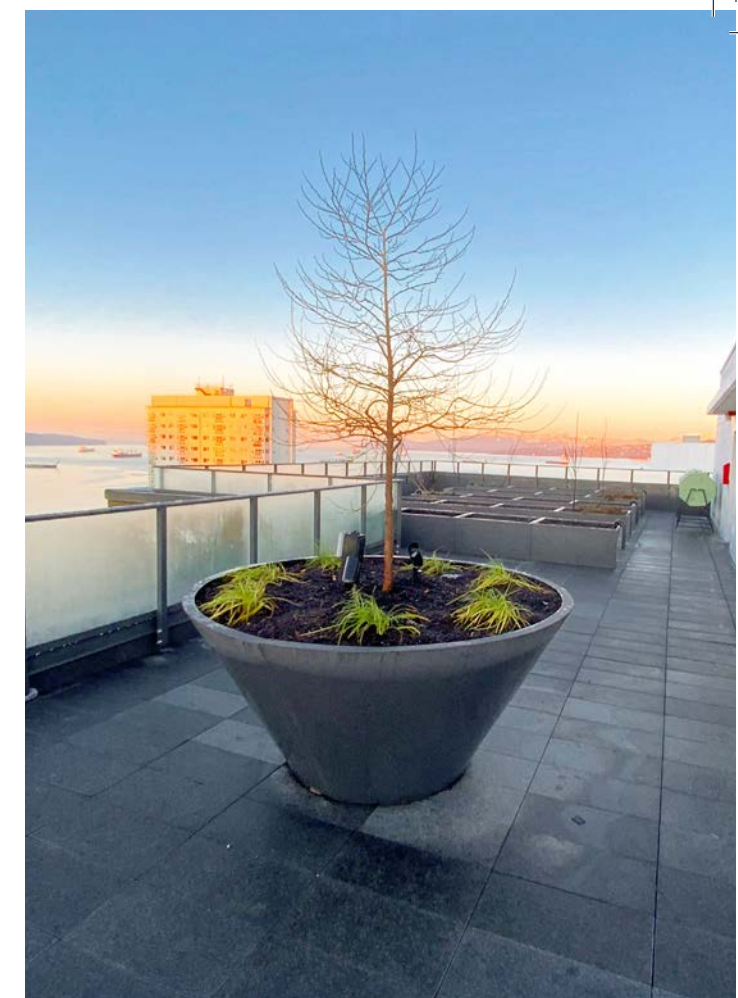
When looking for a stable rust-like appearance in combination weathering resistance.

Stainless

Strong, resilient and corrosion proof, these sleek metal containers will make your space luxe.

Need planters that differ from our standard sizes and colours?

No problem, just let us know what you are looking for and we will be happy to make your custom planters a reality. No planter is

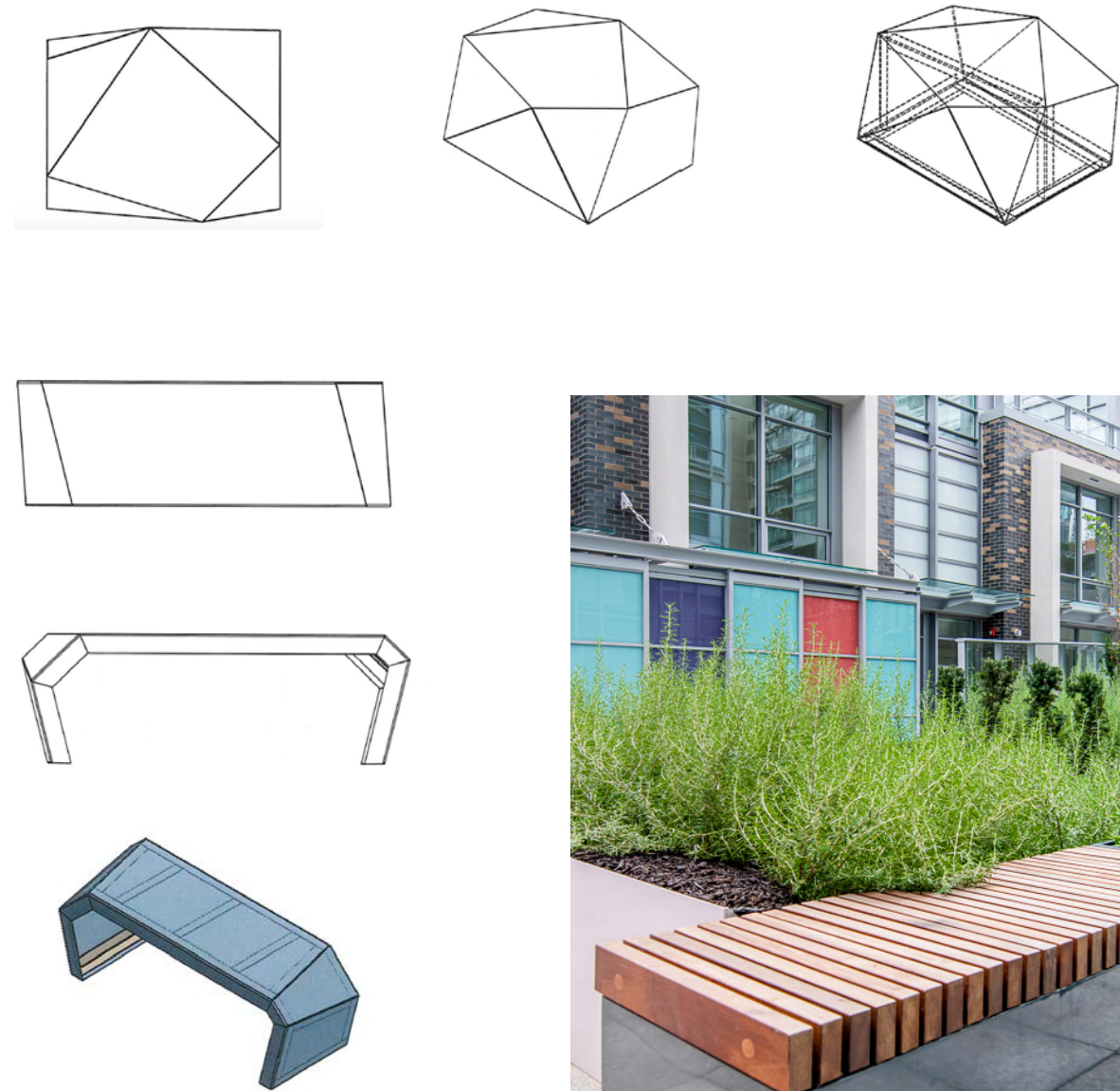


too big or small for us to make at our 50,000 square foot production facility. We fabricate out of aluminum, galvanized steel, corten steel and stainless steel. Our decades of industry experience allow us to make large reinforced planters for commercial applications with ease.



CUSTOM SITE FURNISHINGS

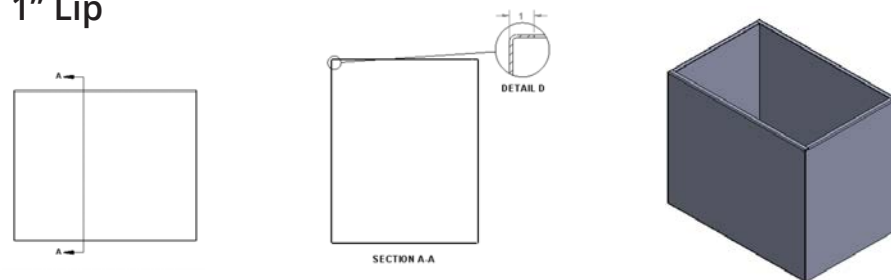
MATERIAL: 0.188" marine grade 5052 aluminum
FINISH: Durable, UV rated powder coat



MANUFACTURING SPECIFICATIONS

STANDARD

1" Lip

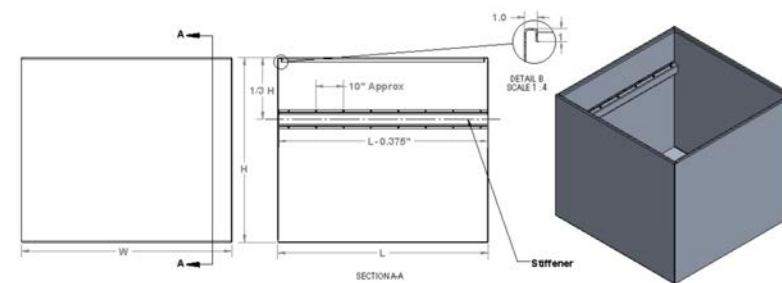


1" Lip, 1" Return or 1 ½" Lip, 1" Return

(Up to 60" Planter Length)

Stiffeners added :

- When LxW greater than or equal to 1600 sq in.
- c/w drop-in tie bars

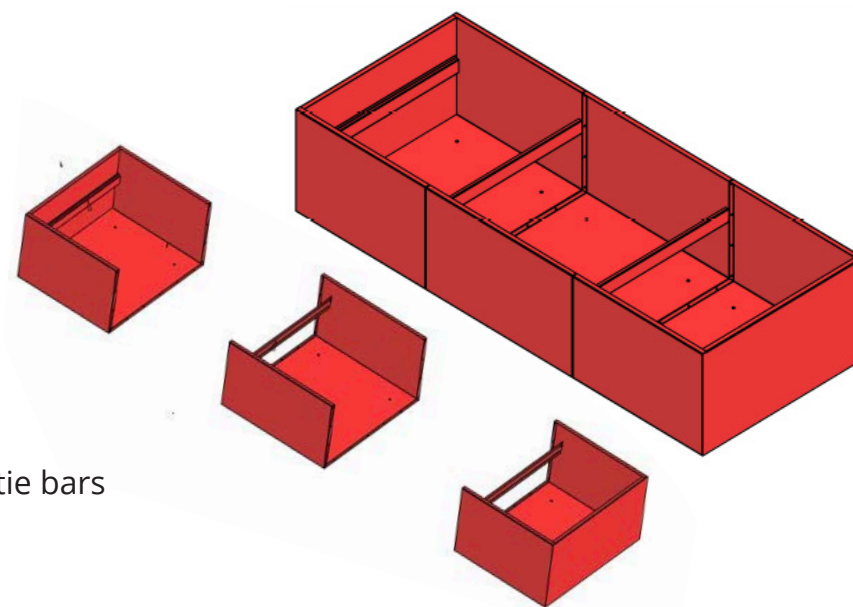


MODULAR

1 ½" Lip, 1" Return

Stiffeners added:

- When LxW greater than or equal to 1600 sq in.
- c/w struts & drop-in tie bars

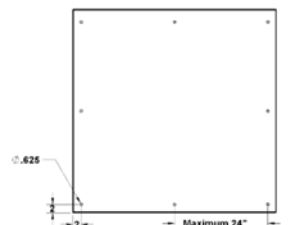


STIFFENERS

- For Stock: Punched on CNC
- Pieces cut, formed, and welded at the desired length
- Mounted on ¼-20 Studs, Clearance holes $\varnothing 0.375$ " on stiffeners
- Welded before ends are welded

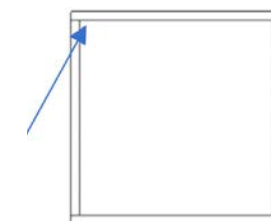
DRAIN HOLES

- Corner
- 2" x 2" From the corner
- $\varnothing 0.625$ "
- Maximum 24" between holes



WELDING INSTRUCTIONS

File or grind inside corners. Remove weld swirls for square corner look.



DROP-IN TIE BARS

3/8 Rod, bent



WARRANTY & CARE



WARRANTY

Planters products carry a 5-year limited warranty on build/structure and a 1- year limited warranty on powder coat finishes. This limited warranty applies to defects that arise during normal use of the product and does not apply to damage due to shipping, accident, alteration, misuse or unintended use tampering, negligence, abuse or normal wear and tear.

TURNAROUND TIME

If you are in a rush, we can do our best to accommodate your needs, so feel free to reach out and see how we can help. Standard planter orders typically take 4-6 weeks with Custom orders usually taking 6-8 weeks, not including drawing approval delays.

**Based on shop load when orders are placed, rush charges may apply.*

MAINTENANCE

Proper care and cleaning can extend the life of your product. To maintain finish, clean regularly with a soft damp cloth and when necessary diluted mild detergent.





ByNature Import Inc
1.855.436.2919
info@bynaturedesign.com
www.bynaturedesign.com



*Vancouver - Calgary - Toronto - Montreal - Quebec (City) - New York
Canada - USA - Europe*